



Involvement of SigT and RstA in the differentiation of *Streptomyces coelicolor*

Xu-Ming Mao, Zhan Zhou, Liang-Ying Cheng, Xiao-Ping Hou, Wen-Jun Guan, Yong-Quan Li*

Zhejiang University, College of Life Sciences, Hangzhou 310058, China

ARTICLE INFO

Article history:

Received 5 August 2009

Revised 28 August 2009

Accepted 9 September 2009

Available online 13 September 2009

Edited by Renee Tsolis

Keywords:

SigT

RstA

Differentiation

Streptomyces coelicolor

ABSTRACT

SigT is an ECF sigma factor in *Streptomyces coelicolor*. *sigT* and its putative anti-sigma factor gene *rstA* are located in one putative operon, and SigT could physically interact with RstA. Deletion of *sigT* or *rstA* caused accelerated morphological development and enhanced production of antibiotics, concomitant with over-expression of *chpE*, *chpH*, *actII-orf4* and *redD*. Furthermore, SigT was undetectable after loss of *rstA*. These data suggested that SigT has a negative role on differentiation and that RstA negatively regulates the SigT activity through a putative antagonistic mechanism and at the post-transcriptional level.

Structured summary:

MINT-7262599, MINT-7262614: *RstA* (uniprotkb:Q9S6U2) physically interacts (MI:0915) with *sigT* (uniprotkb:O86856) by pull down (MI:0096)

MINT-7262539: *rpoC* (uniprotkb:Q8CJT1) physically interacts (MI:0915) with *sigT* (uniprotkb:O86856) by pull down (MI:0096)

MINT-7262574: *RstA* (uniprotkb:Q9S6U2) physically interacts (MI:0915) with *sigT* (uniprotkb:O86856) by anti tag coimmunoprecipitation (MI:0007)

© 2009 Federation of European Biochemical Societies. Published by Elsevier B.V. All rights reserved.

1. Introduction

Extracytoplasmic functions (ECF) sigma factors are the alternative sigma factors of the bacterium σ^{70} family controlling genes responding to various environmental stimuli [1]. Whole genome sequencing project of the soil-dwelling model actinomycete *Streptomyces coelicolor* has revealed remarkable 51 ECF sigma factors, the highest number in bacteria so far identified, while another gram-positive model bacterium *Bacillus subtilis* has seven and the gram-negative model bacterium *Escherichia coli* contains only one. The abundance of ECF sigma factors in *S. coelicolor* implies that they might play major roles in elaborate transcriptional regulation on stress-responsive genes for the adaptation to the complex environments [2,3].

In *S. coelicolor*, only four ECF sigma factors, SigR, SigE, BldN and SigU, have been extensively studied to date in modulation of stress responses and morphological development. SigR and its anti- σ factor RsrA are responsible for the accommodation to the disulphide stresses by maintaining the intracellular reductive environments through the selective transcriptional activation of the *sigR* operon and other target genes [1,3–5]. Recently, it is reported that the decreased synthesis of mycothiol triggers the expression of *sigR* oper-

on, and SigR in turn initiates the transcription of genes for mycothiol synthesis and detoxification [6]. SigE is involved in the maintenance of cell wall integrity by transcriptional modulation of operons for cell wall glycan synthesis [7–9]. However, *sigE* itself is auto-regulated by its own four-gene operon including two-component system of CseB/CseC, which senses the outside stimuli and mediates the signal transduction to up-regulate the *sigE* expression, and CseA, a lipoprotein negatively regulating the *sigE* expression [1,3,9,10]. In addition, SigE is also required for the appropriate sporulation and actinorhodin production at a low concentration of magnesium [8]. BldN is indispensable for the aerial formation and translated primarily as a pro-protein at the vegetative phase but proteolytically cleaved at its N-terminus into a mature form after cells develop into aerial hyphae [11,12]. Over-expression of SigU or removal of its anti- σ factor RsuA results in the delayed development into aerial hyphae [13]. Extracellular proteomic analysis reveals that the exalted SigU activity enhances the secretion of some secreted proteins, lipoproteins and proteases, which provides implications for SigU in morphological differentiation and possibly in cell envelope stress responses [14].

Another ECF sigma factor SigT was previously mentioned in the possible modulation of oxidative stress responses to diamide [1]. Here we presented evidence of SigT and its putative anti- σ factor RstA in regulation of morphological differentiation and secondary metabolism of *S. coelicolor*.

* Corresponding author. Fax: +86 571 88208569.

E-mail address: lyq@zju.edu.cn (Y.-Q. Li).

2. Materials and methods

2.1. Bacterial strains and growth media

The *S. coelicolor* strains in this study were listed in Table 1. *E. coli* ET12567 [15] with the helper plasmid pUZ8002 was for plasmid introduction into *S. coelicolor* by conjugation [16]. *S. coelicolor* strains were grown at 30 °C on MS and R2YE solid media for morphological and secondary metabolism analysis or in YEME for in vivo protein interaction assay [16].

2.2. Plasmid construction

All the plasmids used in this paper were in Table 2 and all primers in this study were listed in Supplementary data S1. The detailed procedure for plasmid construction was in Supplementary data S2.

2.3. In-frame deletion of *sigT* or *rstA* and complementation

Plasmid pLM27 or pLM28 was introduced into M145, respectively, to delete *sigT* or *rstA* by in-frame deletion strategy via double cross-over homologous recombination [16]. Details of construction of *sigT* or *rstA* mutant were described in Supplementary data S3, and the genotypes were verified by PCR and Southern blot (Supplementary data S4). Plasmid pLM34 or pLM36 was transformed into *sigT* or *rstA* mutant, respectively, for complementation.

2.4. Protein extraction and Western blot

For assays of protein expression levels, spores were spread on cellophane overlaid on MS plates [16], and cells were collected at different developmental stages and resuspended in lysis buffer (10 mM Tris, pH 8.0, 1 mM EDTA, pH 8.0, 100 mM NaCl, 10% glycerol, 0.5% NP-40, 1 mM PMSF). Total protein was extracted by ultra-sonication. About 20 µg of total protein was subjected to Western blot [17] with an α-GFP antibody (Proteintech Group, USA) or α-FLAG M2 antibody (Sigma), and coomassie brilliant blue R250 staining of total protein for the loading control (Beyotime, China).

2.5. In vitro GST pull-down assay

The over-night cultured *E. coli* BL21 (DE3) containing pLM29, pLM30, pLM31, pLM32 or pGEX-6P-1, respectively, were re-inoculated in liquid LB at 37 °C to OD₆₀₀ = 0.4, and induced with 0.1 mM IPTG for additional 5 h. Cells were collected, resuspended in PBS and total protein in supernatant was recovered by ultra-sonication and subsequent centrifugation at 13 000×g for 10 min. The GST pull-down assay was demonstrated as described previously [18], and eventually the eluted complex was subjected to Western blot

Table 1
Streptomyces coelicolor strains.

Name	Description or genotype	Reference
M145	Wild type, SCP1 ⁻ , SCP2 ⁻	[16]
J1981	<i>rpoC::6×His</i> of M145	[21]
LM21	<i>sigT</i> in-frame deletion mutant	This work
LM22	<i>rstA</i> in-frame deletion mutant	This work
LM23	LM21/pLM34	This work
LM24	LM22/pLM36	This work
LM25	M145/pLM34	This work
LM26	J1981/pLM34	This work
LM27	LM22/pLM34	This work
LM28	M145/pLM34/pLM36	This work
LM29	M145/pLM1	This work
LM30	LM22/pLM1	This work

Table 2
Plasmids in this study.

Plasmid	Description	Reference
pKC1139	Bifunctional <i>oriT</i> RK2 plasmid for gene deletion	[34]
pGH113	Conjugal plasmid with <i>ermEp</i> [*]	[20]
pIJ8630	Promoter-probing plasmid with <i>egfp</i>	[35]
pPROEX-HTb	<i>E. coli</i> expression vector	Invitrogen
pGEX-6P-1	<i>E. coli</i> expression vector	GE
pET32a	<i>E. coli</i> expression vector	Navagen
pLM1	<i>ermEp</i> [*] in pIJ8630	This work
pLM15	<i>hrdB</i> in pTA2	This work
pLM16	<i>redD</i> in pTA2	This work
pLM17	<i>actII-orf4</i> in pTA2	This work
pLM18	<i>chpE</i> in pTA2	This work
pLM19	<i>chpH</i> in pTA2	This work
pLM26	Kanamycin resistant gene in pLM1	This work
pLM27	<i>sigT</i> in-frame knock-out plasmid	This work
pLM28	<i>rstA</i> in-frame knock-out plasmid	This work
pLM29	<i>sigT</i> in pPROEX-HTb	This work
pLM30	<i>sigT</i> in pGEX-6P-1	This work
pLM31	<i>rstA</i> in pET32a	This work
pLM32	<i>rstA</i> in pGEX-6P-1	This work
pLM33	<i>sigT</i> -linker in pTA2	This work
pLM34	<i>sigT</i> -linker in pLM1	This work
pLM35	<i>3flag-rstA</i> in pTA2	This work
pLM36	<i>3flag-rstA</i> in pLM26	This work

with a α-His antibody (Tiangen, China) or α-GST antibody (Tiangen, China).

2.6. In vivo His pull-down assay

For in vivo His pull-down assay, *S. coelicolor* spores were inoculated in YEME (10.3% sucrose). Mycelia were collected, resuspended in lysis buffer (100 mM NaH₂PO₄, 10 mM Tris, pH 8.0, 20 mM imidazole, 10% glycerol, 1 mM PMSF) and destroyed by ultra-sonication. His pull-down assay was demonstrated as described by the manufacture (Qiagen). The Ni²⁺-NTA binding complex was eluted with 500 mM imidazole and loaded for Western blot [17] with the α-GFP antibody or α-6×His antibody (Tiangen, China).

2.7. Co-immuno-precipitation

Crude extract of *S. coelicolor* mycelia from YEME was prepared in IP buffer (50 mM Tris, pH 7.6, 150 mM NaCl, 0.5% NP-40, 10% glycerol, 1 mM PMSF). About 1 ml of lysate was pre-cleared at 4 °C for 3 h with 20 µl of protein G-Sepharose beads (Roche). 1.0 µg of α-FLAG M2 antibody was added to the lysate at 4 °C for 3 h and subsequently 20 µl of protein G-Sepharose beads were added for over-night incubation. After wash with IP buffer for 5 times, the immuno-complex was eluted with loading buffer by boiling for 5 min and subjected to Western blot with the α-GFP antibody or α-FLAG antibody.

2.8. Antibiotic assay

Quantitative measurements of the actinorhodin (Act) or undecylprodigiosin (Red) were described previously [16]. Briefly, to analyze the total actinorhodin, about 10 mg of cells at various developmental stages on R2YE plates overlaid with cellophane were gathered, extracted with KOH (1 M final concentration), centrifuged at 5000×g for 5 min and the supernatant was determined by the spectrophotometric assay at wavelength 640 nm. For undecylprodigiosin measurement, the pellet recovered from above assay was vacuum freeze-dried, extracted with HCl-acidified methanol over-night and the A₅₃₀ of the supernatants was determined after centrifugation at 5000×g for 5 min.

2.9. RNA preparation

About 50 mg of mycelia collected from cellophane overlaid on R2YE plates were resuspended in 500 μ l of buffer (1% SDS, 4% β -mercaptoethanol, 5 mM EDTA in DEPC-treated H₂O) and homogenized by ultra-sonication. The lysate was immediately extracted with 500 μ l of phenol (pH 5.3) twice and once with 500 μ l of chloroform and precipitated with isopropanol. The genomic DNA was removed by RNase-free DNase I (Takara). Total RNA was precipitated after extract once with phenol/chloroform/isoamyl alcohol (pH 5.3), precipitated with isopropanol and resuspended in DEPC-treated H₂O. The concentration of RNA was determined by spectrometry.

2.10. Low resolution S1 nuclease protection assay

About 30 μ g of total RNA was subjected to S1 nuclease mapping as described [18] with some modifications. Briefly, RNA was hybridized to about 10 ng of single strand DNA (ssDNA) probe(s) in aqueous buffer (40 mM PIPES, pH 6.4, 0.4 M NaCl, 1 mM EDTA) at 65 °C for 16 h after denaturation at 90 °C for 10 min. The single stranded nucleic acids were removed with 100 U of S1 nuclease (Promega) at 37 °C for 1 h, and the hybrids were precipitated and subjected to Southern blot [18]. The biotin-labeled probes for Southern blot hybridization were prepared by PCR with the universal primer 30 and 31 from pTA2 vector with cloned fragments in the presence of biotin-11-dUTP (Fermentas) [19], and the signals were visualized by Chemiluminescent Biotin-labeled Nucleic Acid Detection Kit (Beyotime, China) as described by the manufacture.

The ssDNA probes for RNA hybridization were prepared with λ exonuclease (Fermentas). The 5' phosphorylated primer 29 and unphosphorylated primer 31 were used to amplify the dsDNA from pTA2 vector with cloned fragments. The PCR products were digested with λ exonuclease to remove the 5' phosphorylated sense strand DNA. The anti-sense ssDNA was extracted once with phenol/chloroform/isoamyl alcohol (pH 8.0) and precipitated with isopropanol.

3. Results and discussion

3.1. SigT is an ECF sigma factor in *S. coelicolor*

SCO3892 was designated an ECF sigma factor SigT in *S. coelicolor* genome annotation. It contained two typical independent domains, σ 2 and σ 4, essential for promoter recognition and RNA polymerase recruitment [1,3]. Furthermore, the in vivo His pull-down assay showed that SigT could interact with RpoC, the β' subunit of RNA polymerase core enzyme of *S. coelicolor* (Fig. 1). SigT was C-terminally tagged with GFP and expressed under the up-mutant *ermE* promoter (*ermEp**) [20], while RpoC was tagged with 6 \times His in an engineered strain J1981 [21]. SigT could be co-pelleted with RpoC but not in the control strain M145 expressing SigT-GFP (Fig. 1). As a control, GFP, instead of SigT-GFP, was not detected in the same His

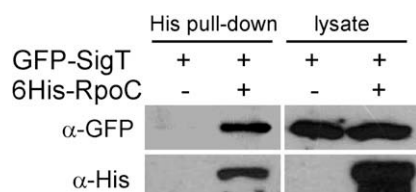


Fig. 1. Interaction between SigT and RNA polymerase. In vivo His pull-down assay. M145 or J1981 with plasmid pLM34, respectively, was cultured in YEME, lysed by sonication and subjected to His pull-down assay and Western blot.

pull-down assay as demonstrated for SigT-GFP (data not shown). These data suggested SigT was an ECF sigma factor in *S. coelicolor*.

3.2. RstA, a putative anti- σ factor, interacts with SigT

Genome sequencing revealed that SCO3891 resided with *sigT* in the same putative operon (Fig. 2A), and encoded a putative anti- σ factor of SigT. It was thus designated *rstA*. The RstA contained a conserved motif HXXXCXXC at its N-terminus [13]. This motif has been demonstrated required for the activity of RsrA, the anti- σ factor of SigR, in the maintenance of intracellular thiol-disulfide redox balance [22–24]. Interestingly, *trxAB* operon just located downstream of the putative *sigT* operon (Fig. 2A). It was hence supposed that SigT/RstA was also involved in the regulation of redox equilibration and *sigT* mutant has already been mentioned to be sensitive to diamide [1]. However, we did not observe the sensitivity of *sigT* mutant to H₂O₂. Another characteristic of RstA as an anti- σ factor was a putative trans-membrane domain (data not shown), since many ECF sigma factors responded to external signals through its membrane associated anti- σ factor [25].

In vitro and in vivo protein interaction assays were carried out to confirm the interaction between SigT and RstA. GST, GST-SigT, GST-RstA, His-SigT and His-RstA, were expressed in *E. coli*, respectively. The reciprocal in vitro GST pull-down assays showed that SigT could specifically interact with RstA (Fig. 2B and C). Furthermore, when SigT-GFP and RstA-3FLAG were co-expressed in *S. coelicolor* under *ermEp**, the SigT-GFP could be specifically co-immuno-precipitated with the α -FLAG antibody in the strain co-expressing these two fusion proteins, but not in the strain only expressing SigT-GFP (Fig. 2D), indicating the specific interaction between SigT and RstA.

3.3. Functional analysis of *sigT* and *rstA* in morphological development

These two genes were knocked out from M145 genome based on the in-frame deletion strategy, which removed the σ 2 and σ 4 domains of SigT and motifs of RstA, respectively (Supplementary data S3 and S4) [16].

On R2YE medium after growth for 40 h, both *sigT* and *rstA* mutants have exhibited apparent white lawn surface, indicating the flourishing aerial mycelium formation, while the wild type cells has just begun to differentiate into aerial hyphae. Reintroduction of *sigT* or *rstA* into *sigT* or *rstA* mutant, respectively, could restore the accelerated morphological development to the level of wild type (Fig. 3A). After incubation for a longer time, spores were observed in *sigT* and *rstA* mutants earlier than wild type (data not shown). In addition, *sigT* mutant differentiated more rapidly than *rstA* mutant (Fig. 3A). Similar phenotypes were also observed on MS and MM media (data not shown). The emergence of aerial mycelia is facilitated by a group of small cell wall proteins, such as chaplins, SapB and rodmins to overcome the surface tension of the mycelium–air interface [26–28]. We observed two chaplin genes, *chpE* and *chpH*, were expressed higher in *sigT* and *rstA* mutants than the wild type, especially at the aerial hypha stage, and even much stronger expression was observed in *sigT* mutant (Fig. 3B). These phenomena suggested both *sigT* and *rstA* had negative roles in morphological development at least by negatively regulating the expression of *chp* genes.

3.4. Negative roles of *sigT* and *rstA* on secondary metabolism

We then examined the roles of *sigT* and *rstA* on secondary metabolism. After grown on the R2YE plate for 1 day, the red antibiotic undecylprodigiosin (Red) were readily observed in *sigT* and *rstA* mutants, and *sigT* mutant was much redder than *rstA* mutant, but the red appearance was not observed in the wild type, *sigT* or

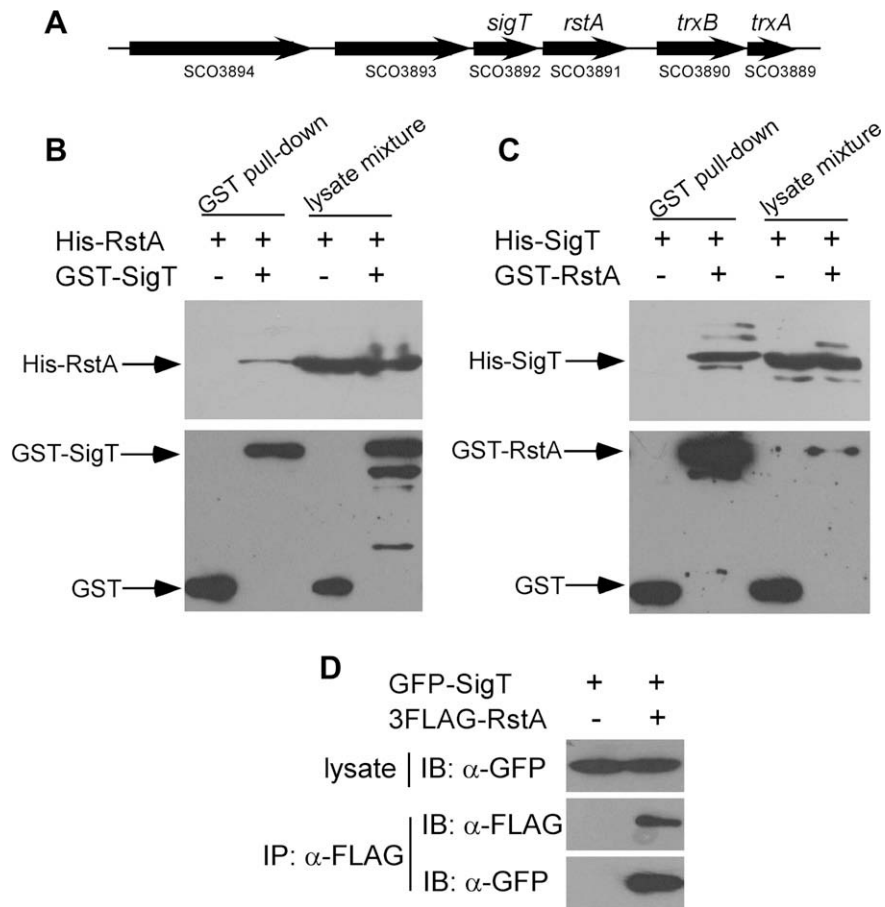


Fig. 2. Interaction between RstA and SigT. (A) Genomic organization of *sigT* and *rstA*. (B) GST, His-RstA, GST-SigT, (C) GST, His-SigT, GST-RstA were expressed in *E. coli*, respectively, lysed by sonication and subjected to GST pull-down assay and Western blot. (D) Co-immuno-precipitation assay. GFP-SigT was expressed in M145 alone or M145 with 3FLAG-RstA. Strains were cultured in YEME, lysed by sonication and subjected to co-immuno-precipitation assay and Western blot.

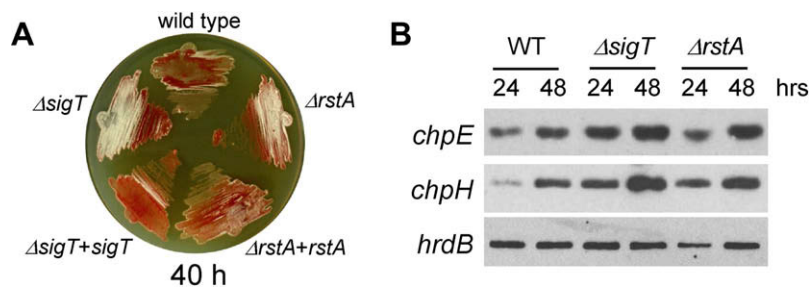


Fig. 3. Phenotypic analysis on morphogenesis after *sigT* or *rstA* deletion. (A) Wild type strain M145 (WT), *sigT* mutant ($\Delta sigT$), *rstA* mutant ($\Delta rstA$) and the complemented strains were streaked on the R2YE plate simultaneously, incubated at 30 °C for the indicated hours and photographed from the top of the plate. (B) RNA was extracted from M145 (WT), *sigT* mutant ($\Delta sigT$) and *rstA* mutant ($\Delta rstA$) after grown on R2YE medium overlaid with cellophane for 24 and 48 h, respectively. S1 nuclease protection assay was demonstrated with ssDNA probe of *chpE*, *chpH* and *hrdB*, respectively.

rstA complementation strain (Fig. 4A). After further incubation for 1 day, we found the similar production pattern of the blue antibiotic actinorhodin (Act) (Fig. 4A), indicating advanced production of Red and Act after deletion of *sigT* or *rstA*. Quantitative measurement of Red and Act production also revealed that *sigT* and *rstA* mutants produced antibiotics much earlier and higher than wild type, and *sigT* mutant showed more prominent antibiotics production than *rstA* mutant (Fig. 4B and C). Consistent with over-production of antibiotics, the *actII-orf4* and *redD*, which encode the positive transcription activators of gene clusters for Red and Act production, respectively [29,30], were also expressed higher in *sigT* and *rstA* mutant than in wild type, and even much more remark-

able over-expression was observed in *sigT* mutant (Fig. 4D). These results suggested both *sigT* and *rstA* also have negative roles on secondary metabolism.

3.5. RstA is required for the presence of SigT protein

We have shown that both *sigT* and *rstA* had negative roles in regulation of morphological development and secondary metabolism, but these phenotypes were not consistent with the hypothesis that RstA acts as the anti- σ factor of SigT, since traditional anti- σ factor mutant displays the opposite phenotypes to the corresponding sigma factor mutant, thus implying additional

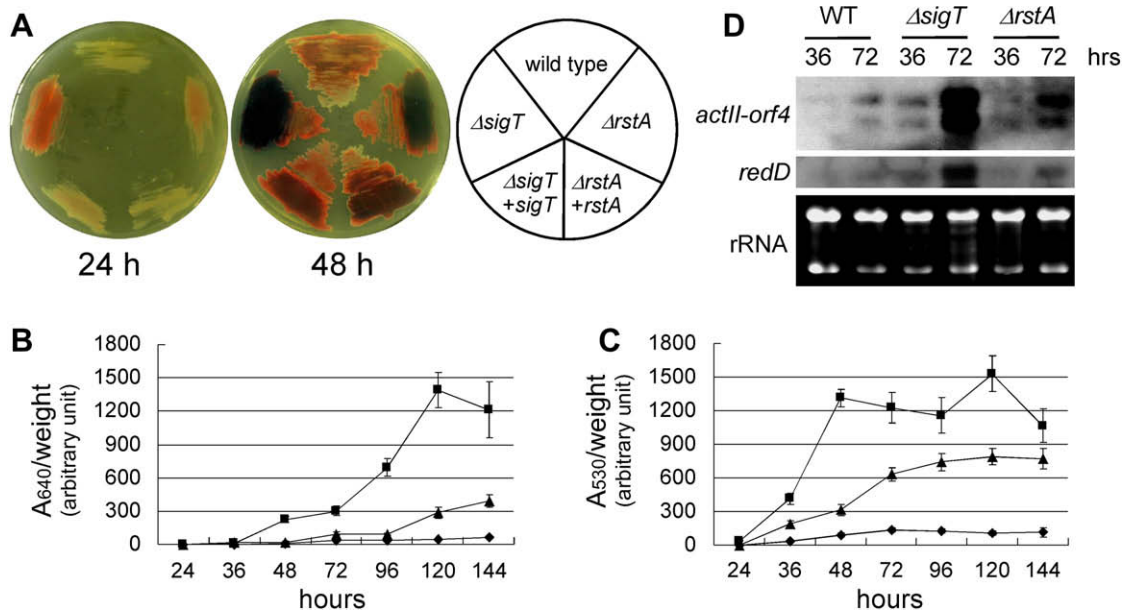


Fig. 4. Involvement of SigT and RstA on secondary metabolism. (A) M145 (WT), *sigT* mutant ($\Delta sigT$), *rstA* mutant ($\Delta rstA$) and the complemented strains were streaked on the R2YE plate, incubated at 30 °C for the indicated hours and photographed from the bottom of the plate. (B) and (C) M145 (WT) (\blacklozenge), *sigT* mutant (\blacksquare) and *rstA* mutant (\blacktriangle) cells were collected from R2YE covered with cellophane and analyzed for actinorhodin (B) and undecylprodigiosin (C) production assay, respectively. The ratios of absorbance to mycelium dry weight were calculated and numbers in the graphs were the mean values of three independent experiments. S.D. (standard deviation) bars were shown on graphs. (D) RNA was extracted from M145 (WT), *sigT* mutant ($\Delta sigT$) and *rstA* mutant ($\Delta rstA$) after grown on R2YE medium overlaid with cellophane for the indicated hours, respectively. S1 nuclease protection assay was demonstrated with ssDNA probes of *actII-orf4* and *redD*, respectively. For a loading control, about 1 μ g of total RNA were loaded on 1% TBE agarose gel and photographed.

mechanisms of RstA in regulating the SigT activities. SigT-GFP was over-expressed under the *ermEp** promoter in wild type, *rstA* mutant and wild type with *rstA* over-expression also under *ermEp**. SigT-GFP fusion protein was almost invariable in wild type and *rstA* over-expression strains during the developmental course (Fig. 5A, lanes 1–4 and 9–12). But interestingly and surprisingly, this fusion protein was not detected when *rstA* was deleted (Fig. 5A, lanes 5–8), which suggested RstA was essential for the existence of SigT protein in *S. coelicolor*.

Since integration of the plasmid containing *ermEp*-sigT-egfp* into the genome was verified by PCR (data not shown), GFP under *ermEp** was expressed both in wild type and *rstA* mutant. We found steady expression of GFP during morphological development in both strains on MS medium (Fig. 5B) or on R2YE medium (data not shown), and no significant difference of the GFP protein levels between wild type and *rstA* mutant was observed (Fig. 5B). These results suggested *ermEp** was still active in *rstA* mutant as in wild

type. Thus, these results indicated RstA was required for the post-transcriptional regulation of SigT protein.

Here we presented evidence that an ECF sigma factor SigT could directly interact with its putative anti- σ factor RstA. Phenotypal and gene expression analysis showed that both SigT and RstA were the negative regulators in morphological development and secondary metabolism. Anti- σ factors execute their roles by specifically antagonizing its cognate sigma factors in transcription initiations by interfering with the binding of sigma factors to the promoters or to the RNA polymerase core enzyme [31,32]. Thus, it is anticipated that loss of anti- σ factors should result in enhanced activity of sigma factors and thus causing phenotypes or gene expression patterns opposite to the mutant of sigma factors, such as *rsuA* to *sigU*, *rsbA* to *sigB*, etc., in *S. coelicolor* [13,14,33]. But it was an exception for SigT-RstA, since we repeatedly observed accelerated differentiation in *sigT* and *rstA* mutants. It could at least be explained by the disappearance of the SigT protein in *rstA* mutant,

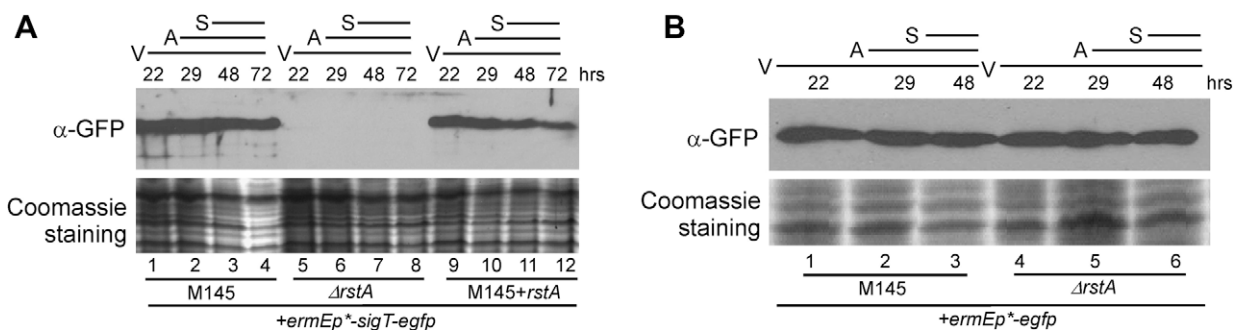


Fig. 5. Presence of SigT protein depends on RstA. (A) Cells of wild type (M145), *rstA* mutant ($\Delta rstA$) and wild type with *rstA* over-expression (M145 + *rstA*) containing pLM34 were collected from MS plates overlaid with cellophane after incubation for the indicated hours, destroyed by ultra-sonication and about 20 μ g of total protein were subjected for Western blot with an α -GFP antibody and coomassie blue staining. Vegetative mycelia (V), aerial hyphae (A) and spores (S) indicating different morphological phases were shown. (B) Cells of LM29 (M145 + *ermEp*-gfp*) and LM30 ($\Delta rstA$ + *ermEp*-gfp*) were gathered from MS plates overlaid with cellophane after incubation for the indicated hours and treated in the same way as in (A). Vegetative mycelia (V), aerial hyphae (B) and spores (S) indicating different morphological phases were shown.

which resulted in the decreased but not enhanced SigT activities. However, more experimental efforts, such as microarray, were still needed for the further proper elucidation of more prominent phenotypes observed in *sigT* mutant.

Acknowledgements

We thank Professor Mark J. Buttner in John Innes Centre, UK, for sending us the *S. coelicolor* strain J1981 and plasmid pIJ8630. This work was supported by the National Sciences Foundation of China (30700006) and Zijin Project of Zhejiang University to Xu-Ming Mao.

Appendix A. Supplementary data

Supplementary data associated with this article can be found, in the online version, at [doi:10.1016/j.febslet.2009.09.025](https://doi.org/10.1016/j.febslet.2009.09.025).

References

- [1] Helmann, J.D. (2002) The extracytoplasmic function (ECF) sigma factors. *Adv. Microb. Physiol.* 46, 47–110.
- [2] Bentley, S.D. et al. (2002) Complete genome sequence of the model actinomycete *Streptomyces coelicolor* A3(2). *Nature* 417, 141–147.
- [3] Paget, M.S.B., Hong, H.-J., Bibb, M.J. and Buttner, M.J. (2002) The ECF sigma factors of *Streptomyces coelicolor* A3(2) in: SGM Symposium 61: Signals, Switches, Regulons and Cascades: Control of Bacterial Gene Expression (Hodgson, D.A. and Thomas, C.M., Eds.), pp. 105–125, Cambridge University Press.
- [4] Li, W., Bottrill, A.R., Bibb, M.J., Buttner, M.J., Paget, M.S. and Kleanthous, C. (2003) The role of zinc in the disulphide stress-regulated anti-sigma factor RsrA from *Streptomyces coelicolor*. *J. Mol. Biol.* 333, 461–472.
- [5] Zdanowski, K., Doughty, P., Jakimowicz, P., O'Hara, L., Buttner, M.J., Paget, M.S. and Kleanthous, C. (2006) Assignment of the zinc ligands in RsrA, a redox-sensing ZAS protein from *Streptomyces coelicolor*. *Biochemistry* 45, 8294–8300.
- [6] Park, J.H. and Roe, J.H. (2008) Mycothiol regulates and is regulated by a thiol-specific antisigma factor RsrA and sigma(R) in *Streptomyces coelicolor*. *Mol. Microbiol.* 68, 861–870.
- [7] Hong, H.J., Paget, M.S. and Buttner, M.J. (2002) A signal transduction system in *Streptomyces coelicolor* that activates the expression of a putative cell wall glycan operon in response to vancomycin and other cell wall-specific antibiotics. *Mol. Microbiol.* 44, 1199–1211.
- [8] Paget, M.S., Chamberlin, L., Atrih, A., Foster, S.J. and Buttner, M.J. (1999) Evidence that the extracytoplasmic function sigma factor sigmaE is required for normal cell wall structure in *Streptomyces coelicolor* A3(2). *J. Bacteriol.* 181, 204–211.
- [9] Paget, M.S., Leibovitz, E. and Buttner, M.J. (1999) A putative two-component signal transduction system regulates sigmaE, a sigma factor required for normal cell wall integrity in *Streptomyces coelicolor* A3(2). *Mol. Microbiol.* 33, 97–107.
- [10] Hutchings, M.I., Hong, H.J., Leibovitz, E., Sutcliffe, I.C. and Buttner, M.J. (2006) The sigma(E) cell envelope stress response of *Streptomyces coelicolor* is influenced by a novel lipoprotein, CseA. *J. Bacteriol.* 188, 7222–7229.
- [11] Bibb, M.J. and Buttner, M.J. (2003) The *Streptomyces coelicolor* developmental transcription factor sigmaBldN is synthesized as a proprotein. *J. Bacteriol.* 185, 2338–2345.
- [12] Bibb, M.J., Molle, V. and Buttner, M.J. (2000) Sigma(BldN), an extracytoplasmic function RNA polymerase sigma factor required for aerial mycelium formation in *Streptomyces coelicolor* A3(2). *J. Bacteriol.* 182, 4606–4616.
- [13] Gehring, A.M., Yoo, N.J. and Losick, R. (2001) RNA polymerase sigma factor that blocks morphological differentiation by *Streptomyces coelicolor*. *J. Bacteriol.* 183, 5991–5996.
- [14] Gordon, N.D., Ottaviano, G.L., Connell, S.E., Tobkin, G.V., Son, C.H., Shterental, S. and Gehring, A.M. (2008) Secreted-protein response to sigmaU activity in *Streptomyces coelicolor*. *J. Bacteriol.* 190, 894–904.
- [15] MacNeil, D.J., Occi, J.L., Gewain, K.M., MacNeil, T., Gibbons, P.H., Ruby, C.L. and Danis, S.J. (1992) Complex organization of the *Streptomyces avermitilis* genes encoding the avermectin polyketide synthase. *Gene* 115, 119–125.
- [16] Kieser, T., Bibb, M.J., Butter, M.J., Chater, K.F. and Hopwood, D.A. (2000) *Practical Streptomyces Genetics*, The John Innes Foundation.
- [17] Lee, E.J., Karoonuthaisiri, N., Kim, H.S., Park, J.H., Cha, C.J., Kao, C.M. and Roe, J.H. (2005) A master regulator sigmaB governs osmotic and oxidative response as well as differentiation via a network of sigma factors in *Streptomyces coelicolor*. *Mol. Microbiol.* 57, 1252–1264.
- [18] Sambrook, J., MacCallum, P. and Russell, D. (2000) *Molecular Cloning: A Laboratory Manual*, third ed., Cold Spring Harbor Laboratory Press.
- [19] Lo, Y.M.D. and An, S.F. (1996) *Methods in Molecular Medicine*, Humana Press Inc..
- [20] Mo, H.B., Bai, L.Q., Wang, S.L. and Yang, K.Q. (2004) Construction of efficient conjugal plasmids between *Escherichia coli* and *Streptomyces*. *Sheng Wu Gong Cheng Xue Bao* 20, 662–666.
- [21] Babcock, M.J., Buttner, M.J., Keler, C.H., Clarke, B.R., Morris, R.A., Lewis, C.G. and Brawner, M.E. (1997) Characterization of the *rpoC* gene of *Streptomyces coelicolor* A3(2) and its use to develop a simple and rapid method for the purification of RNA polymerase. *Gene* 196, 31–42.
- [22] Paget, M.S., Kang, J.G., Roe, J.H. and Buttner, M.J. (1998) SigmaR, an RNA polymerase sigma factor that modulates expression of the thioredoxin system in response to oxidative stress in *Streptomyces coelicolor* A3(2). *EMBO J.* 17, 5776–5782.
- [23] Paget, M.S., Bae, J.B., Hahn, M.Y., Li, W., Kleanthous, C., Roe, J.H. and Buttner, M.J. (2001) Mutational analysis of RsrA, a zinc-binding anti-sigma factor with a thiol-disulphide redox switch. *Mol. Microbiol.* 39, 1036–1047.
- [24] Paget, M.S., Molle, V., Cohen, G., Aharonowitz, Y. and Buttner, M.J. (2001) Defining the disulphide stress response in *Streptomyces coelicolor* A3(2): identification of the sigmaR regulon. *Mol. Microbiol.* 42, 1007–1020.
- [25] Raivio, T.L. and Silhavy, T.J. (2001) Periplasmic stress and ECF sigma factors. *Annu. Rev. Microbiol.* 55, 591–624.
- [26] Capstick, D.S., Willey, J.M., Buttner, M.J. and Elliot, M.A. (2007) SapB and the chaplins: connections between morphogenetic proteins in *Streptomyces coelicolor*. *Mol. Microbiol.* 64, 602–613.
- [27] Claessen, D., Stokroos, I., Deelstra, H.J., Penninga, N.A., Bormann, C., Salas, J.A., Dijkhuizen, L. and Wosten, H.A. (2004) The formation of the rodlet layer of streptomycetes is the result of the interplay between rodlets and chaplins. *Mol. Microbiol.* 53, 433–443.
- [28] Elliot, M.A., Karoonuthaisiri, N., Huang, J., Bibb, M.J., Cohen, S.N., Kao, C.M. and Buttner, M.J. (2003) The chaplins: a family of hydrophobic cell-surface proteins involved in aerial mycelium formation in *Streptomyces coelicolor*. *Gene Dev.* 17, 1727–1740.
- [29] Takano, E., Gramajo, H.C., Strauch, E., Andres, N., White, J. and Bibb, M.J. (1992) Transcriptional regulation of the redD transcriptional activator gene accounts for growth-phase-dependent production of the antibiotic undecylprodigiosin in *Streptomyces coelicolor* A3(2). *Mol. Microbiol.* 6, 2797–2804.
- [30] Fernandez-Moreno, M.A., Martinez, E., Caballero, J.L., Ichinose, K., Hopwood, D.A. and Malpartida, F. (1994) DNA sequence and functions of the actVI region of the actinorhodin biosynthetic gene cluster of *Streptomyces coelicolor* A3(2). *J. Biol. Chem.* 269, 24854–24863.
- [31] Helmann, J.D. (1999) Anti-sigma factors. *Curr. Opin. Microbiol.* 2, 135–141.
- [32] Hughes, K.T. and Mathee, K. (1998) The anti-sigma factors. *Annu. Rev. Microbiol.* 52, 231–286.
- [33] Lee, E.J., Cho, Y.H., Kim, H.S., Ahn, B.E. and Roe, J.H. (2004) Regulation of sigmaB by an anti- and an anti-anti-sigma factor in *Streptomyces coelicolor* in response to osmotic stress. *J. Bacteriol.* 186, 8490–8498.
- [34] Bierman, M., Logan, R., O'Brien, K., Seno, E.T., Rao, R.N. and Schoner, B.E. (1992) Plasmid cloning vectors for the conjugal transfer of DNA from *Escherichia coli* to *Streptomyces* spp.. *Gene* 116, 43–49.
- [35] Sun, J., Kelemen, G.H., Fernandez-Abalos, J.M. and Bibb, M.J. (1999) Green fluorescent protein as a reporter for spatial and temporal gene expression in *Streptomyces coelicolor* A3(2). *Microbiology* 145 (Pt. 9), 2221–2227.